

 **SOFTWARE**

Web-Based Energy Information Reporting

Clariti is a web-based energy information and reporting tool which provides users with a view of when, where and how much energy is being used at any time.

Clariti provides critical insight into customer energy usage through a range of actionable reports (both delivered and online), usage notifications, and interactive performance charts.

Clariti is meticulously designed for ease of use and flexibility, to utilise information for better management of energy usage.



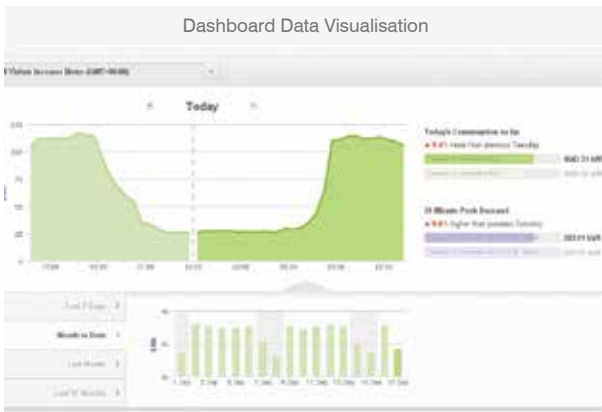
I Key Features



Web-Based Energy Information Reporting

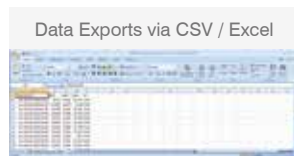
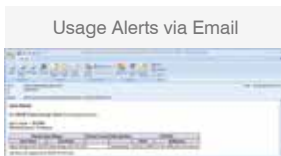
Benefits

- Leverage existing time interval data to provide reporting over electricity and gas temperature (or any time interval based data)
- Implement energy management strategies, monitor and evaluate the effectiveness of energy saving measures
- Evaluate and compare energy performance across large aggregated multiple site organisations
- Compare different energy tariffs applied to the same site
- Meet and actively maintain environmental goals and objectives
- Present a value-added service to users and give your organisation a point of difference from your competitors



Features

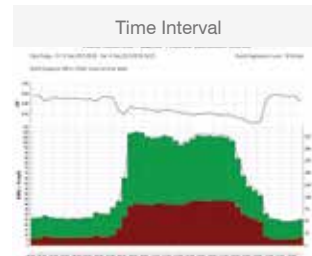
- Compare current energy use against historical usage
- Compare energy data across multiple sites
- View and compare aggregate usage across multiple sites
- Highlight variances or problem areas and monitor individual sites for operational efficiency
- Analyse Time of Use and Fixed Rate energy charges
- Generate alerts when energy usage exceeds a pre-set threshold
- Interactive dashboard view of energy performance
- A wide range of configurable interactive reports that users can easily adjust and tailor, to suit specific reporting needs
- Schedule reports to be emailed directly to users



Report Options

View Usage over Time:

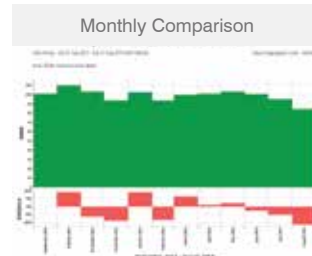
- Time Interval
- Peak Demand
- Time of use
- Tariff
- CO² Emissions
- Voltage
- Calendar Month



Compare:

- Days/Weeks/Months
- Site Usage (Overlaid)

- Like Days/Months



Data and Exports:

- Tabular Data
- CSV/Excel Export

Implementation Options

- Can be re-branded to suit a corporate identity
- Subscription based service with no capital outlay/infrastructure costs, OR
- Deploy directly onsite

EDMI Limited (Headquarters)

47 Yishun Industrial Park A, Singapore 768724
 Tel: +65 6756 2938 Fax: +65 6756 0125
 Email: marketing@edmi-meters.com
techsupport@edmi-meters.com

www.edmi-meters.com

