

EDMI ENERGY CLOUD

*The **energy management solution***



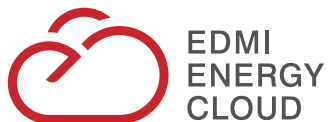
GAS



ELECTRICITY



WATER



Contents

1.0 - EDMI Energy Cloud	2
1.1 - The Status Quo	3
1.2 - The Smart Solution	4
1.3 - Energy Cloud Benefits	5
2.0 - What is EDMI Energy Cloud?	6
2.1 - Manage Meter Assets	7 - 8
2.3 - Collect & Validate Billing Data	9
2.4 - Smart Data Analysis	10 - 11
2.6 - Energy & Demand Management	12 - 13
3.0 - Featured EDMI Products and Software	14

1.0

EDMI ENERGY CLOUD

EDMI Energy Cloud combines metering products, communications and software, to deliver full metering solutions

Reduce Time & Costs

to roll out a
Fully Integrated System

Future Proof Your Business

scales as your
Business Grows

Risk Management

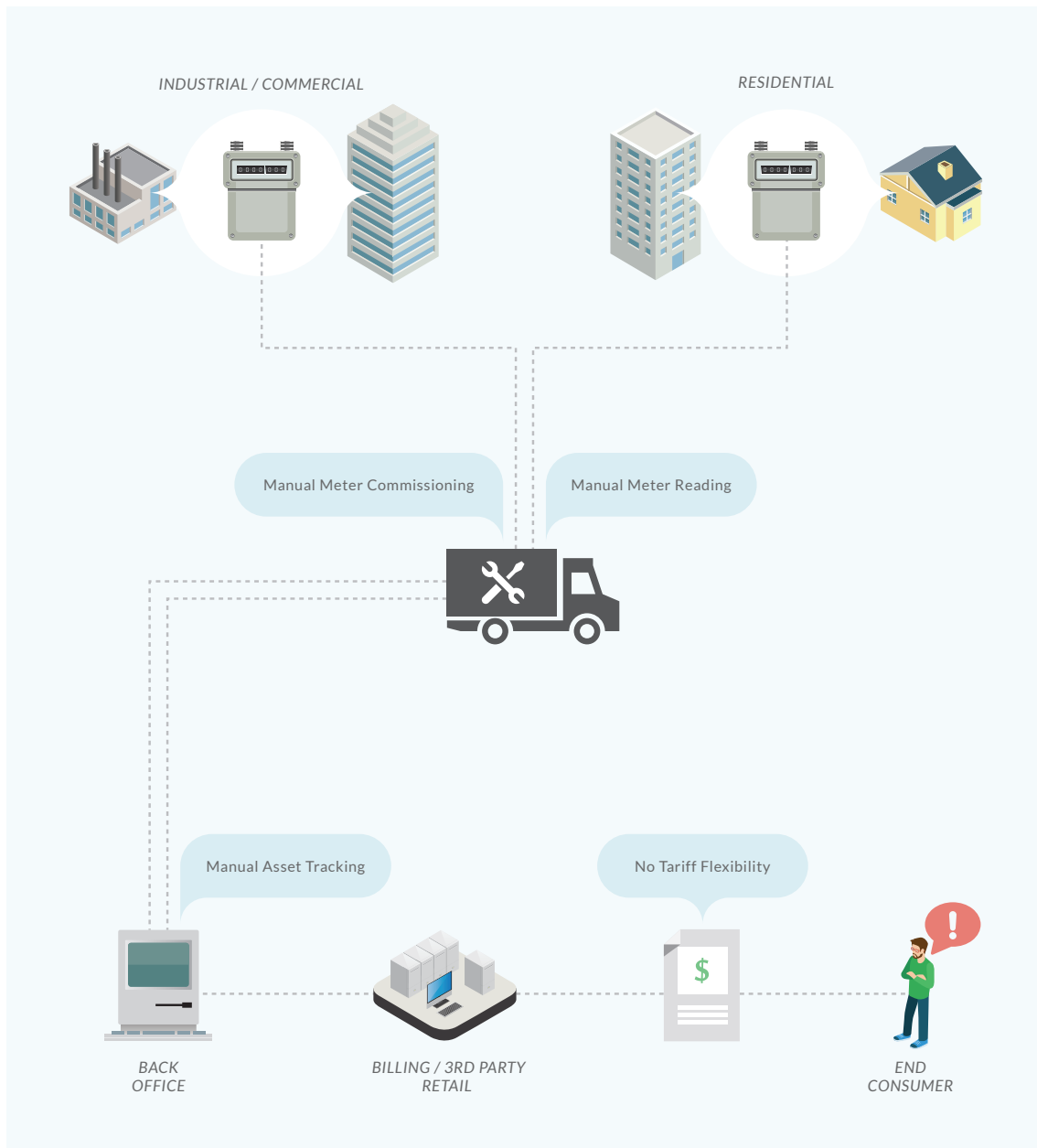
over 10 years experience delivering
Cloud Based Metering Services

Value Adding Services

leverage meter assets to
Deliver Real Value, not just data

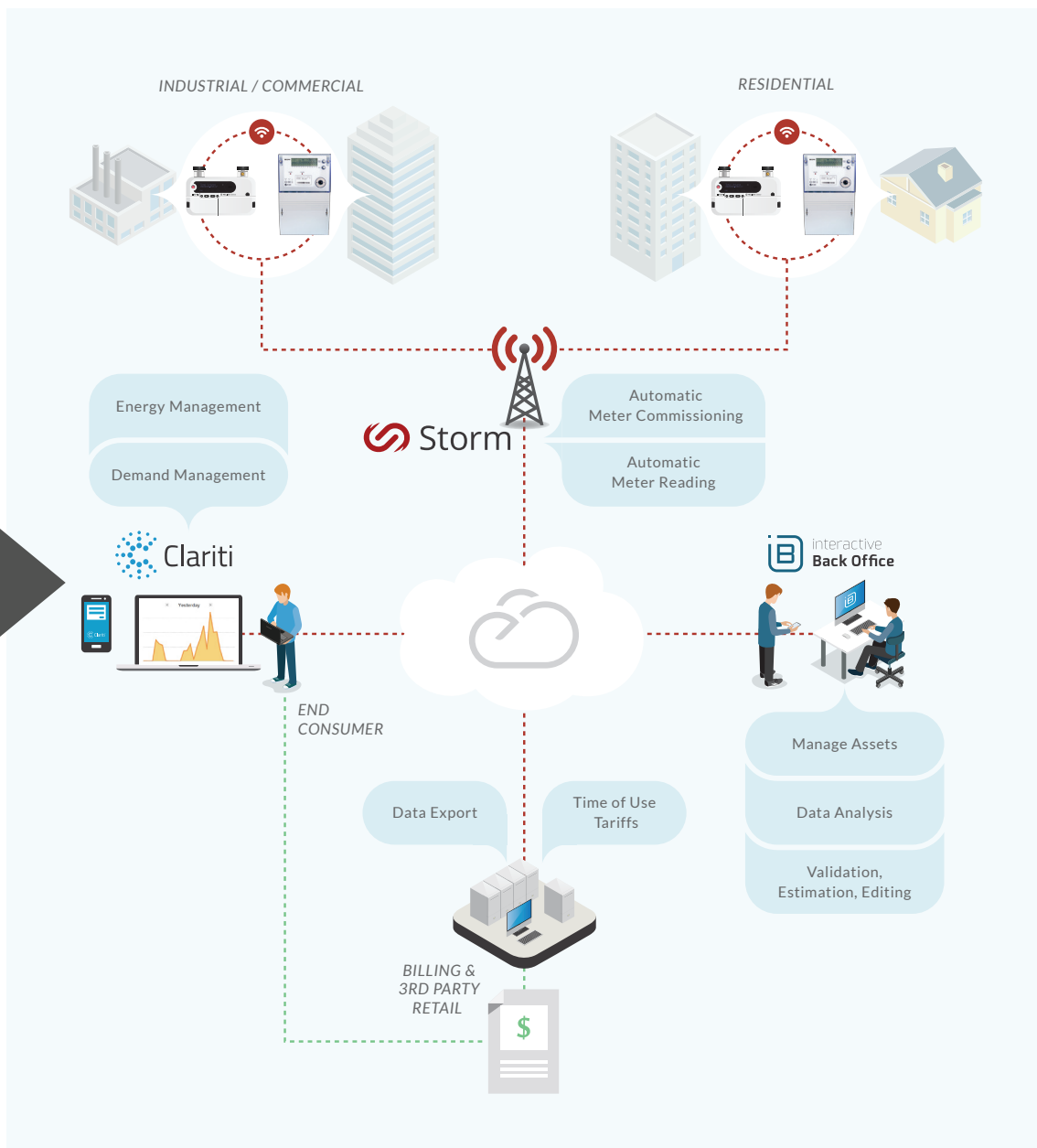
THE STATUS QUO

Disparate System Components



THE SMART SOLUTION

Seamless Connectivity



1.3

EDMI ENERGY CLOUD

ENERGY CLOUD

BENEFITS

Turn key solution with no capital outlay

Hosted in the EDMi Cloud to avoid upfront licensing and infrastructure costs

Manage energy performance & environment impacts

Powerful data portal suitable for use by end consumers and utilities alike

Generate and deliver revenue grade billing data

Perform Validation, Estimation and Editing of data, prior to bill generation

Seamless roll-out and commissioning of meter assets

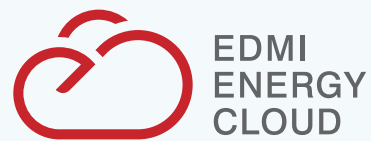
Meters automatically commission and register with back office system, avoiding manual set up and data entry errors

Remotely manage entire fleet, no more costly site visits

Extend the life of entire fleet through remote updates

Reduce losses

Tamper detection, analysis and comparison of usage patterns to detect theft



2.0

WHAT IS EDMI ENERGY CLOUD?

Manage *Meter Assets*

- Seamless meter installation & provisioning
- Remote meter updates
- Disconnect / Reconnect / Load Control



Collect & Validate *Billing Data*

- Time of Use meter data
- Data Validation, Estimation and Editing
- Export revenue-grade Billing Data



Smart *Data Analysis*

- Detect & manage non-technical losses
- Detect meter faults
- Automatically schedule meter maintenance



Energy and Demand Management

- Monitor energy usage, performance & cost
- Demand Management
- Compare & Manage performance across multiple sites



2.1

WHAT IS EDM ENERGY CLOUD?

MANAGE METER ASSETS

Seamless Meter Commissioning

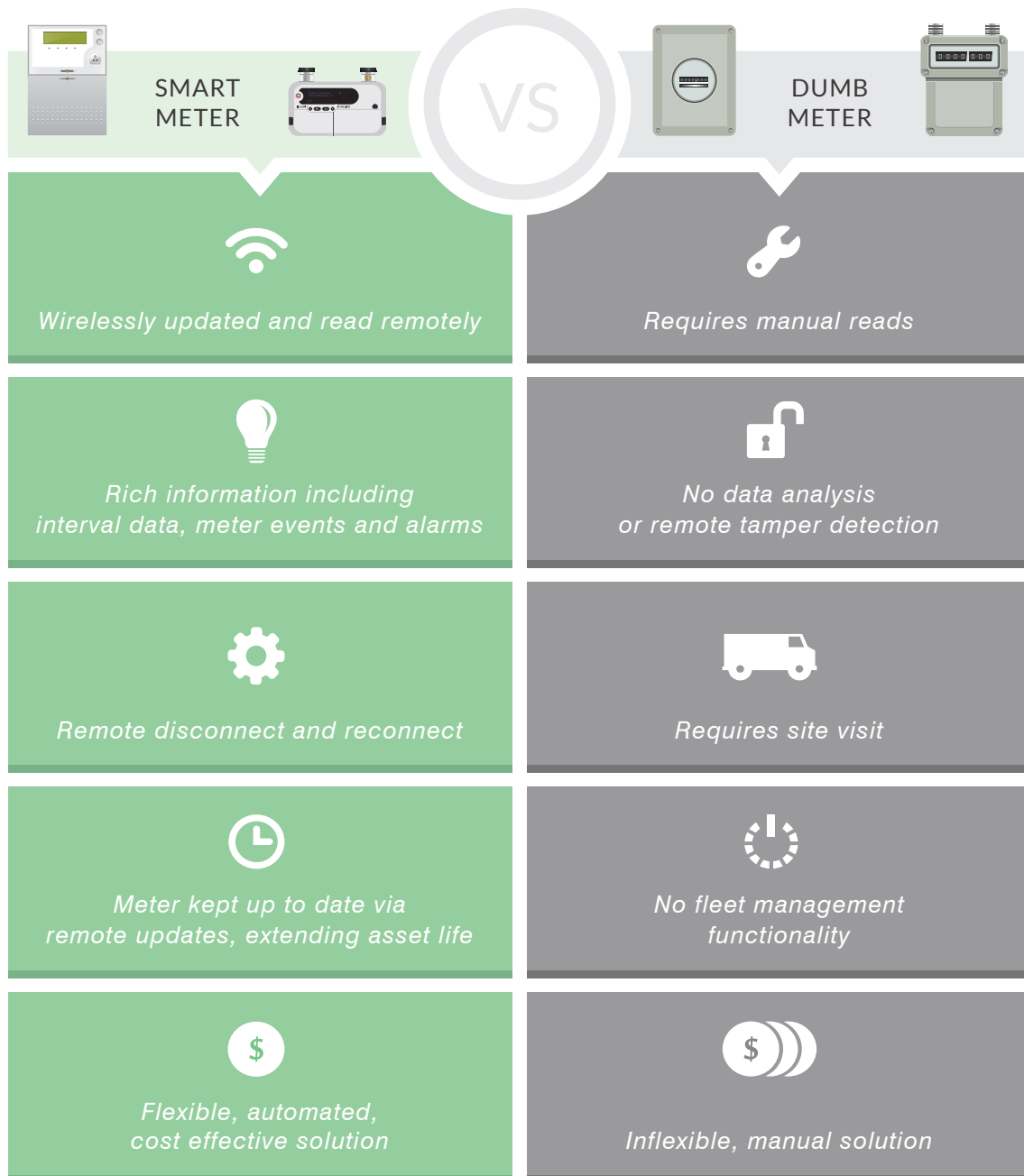


2.2

WHAT IS EDM ENERGY CLOUD?

MANAGE METER ASSETS

Manage Assets Remotely

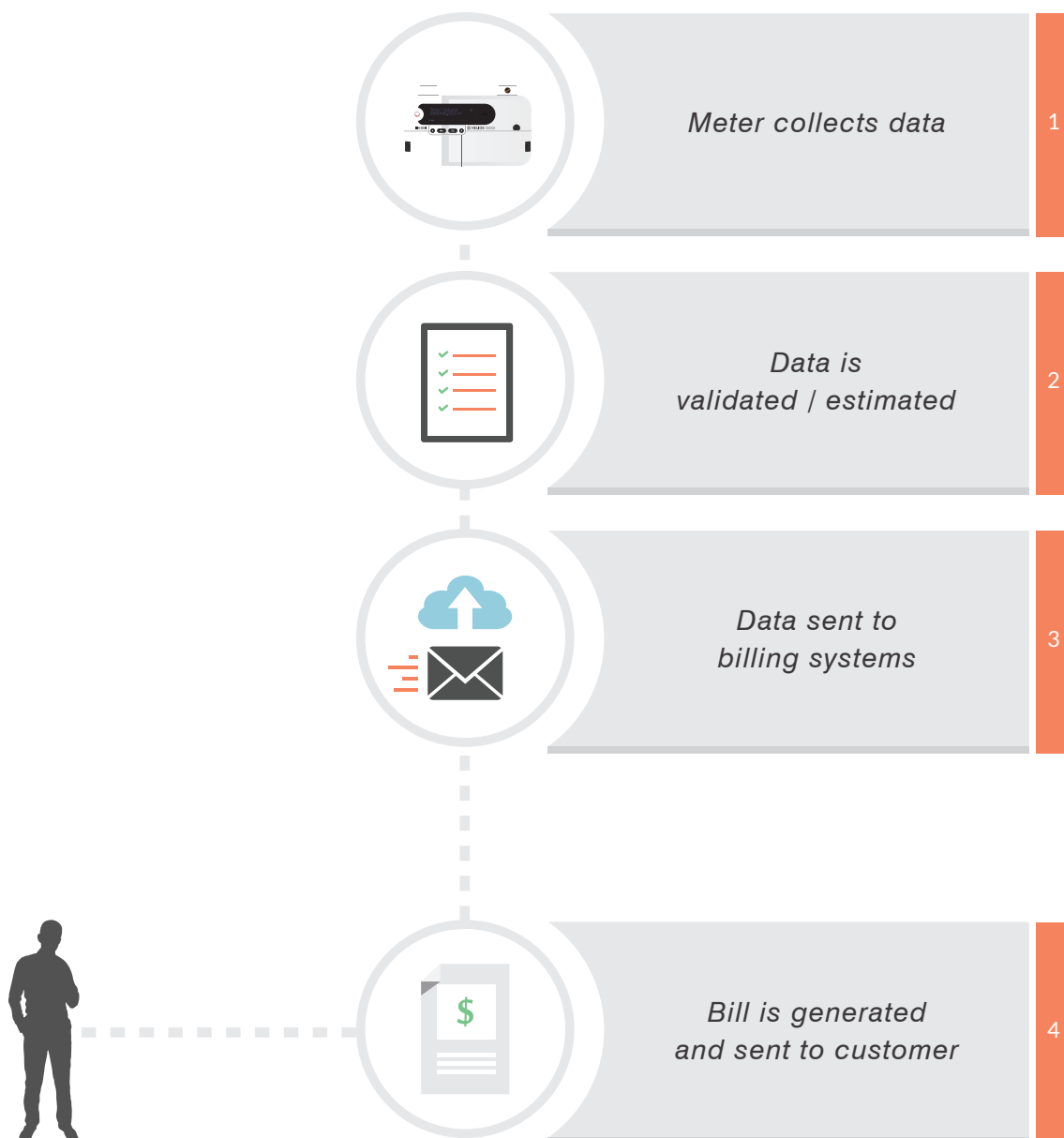


2.3

WHAT IS EDM ENERGY CLOUD?

COLLECT & VALIDATE BILLING DATA

Collect, Validate & Deliver Revenue Grade Data



2.4

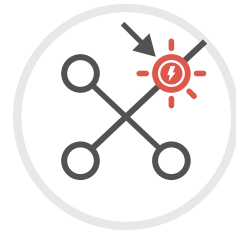
WHAT IS EDM ENERGY CLOUD?

SMART DATA ANALYSIS

Detect Theft

1

Energy theft occurs



2

System automatically analyses usage patterns & events



3

System Operator alerted to possible theft



4

Dispatch service provider to inspect site



2.5

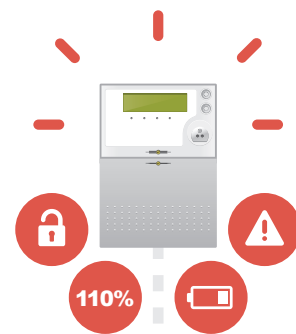
WHAT IS EDM ENERGY CLOUD?

SMART DATA ANALYSIS

Manage Meter Issues, Maintenance & Faults

1

*Issue occurs at installed meter
eg: tamper, overload,
low battery or other fault*



2

*System processes meter data
and alarms*



3

*System notifies operator of
meter maintenance required*



4

*Dispatch service provider to
service meter*



2.6

WHAT IS EDM ENERGY CLOUD?

ENERGY & DEMAND MANAGEMENT

Monitor Energy Performance

1

*Bill received,
higher than expected?*

2

Notice something unusual

3

Monitor performance daily

4

*End of billing cycle,
receive regular report
& review usage*



2.7

WHAT IS EDM ENERGY CLOUD?

ENERGY & DEMAND MANAGEMENT

Manage Peak Demand

1

Demand approaches threshold

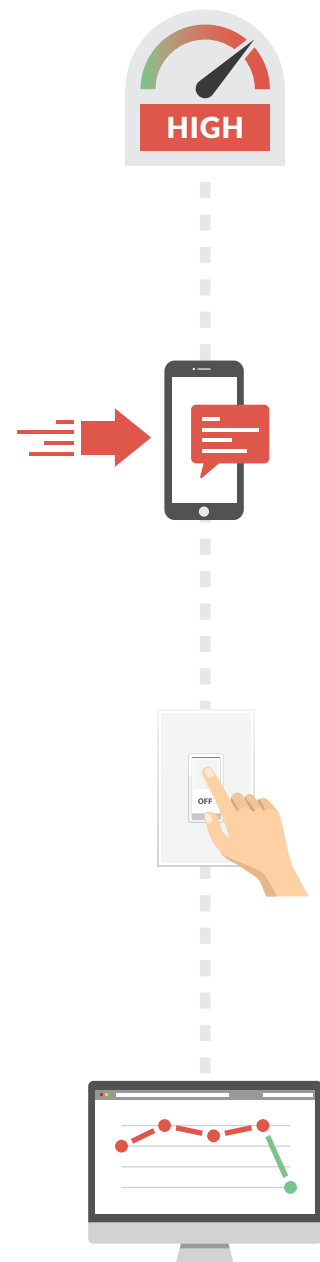
2

System sends a notification

3

Take immediate action

4

Demand drops

FEATURED EDMI PRODUCTS



HELIOS SERIES

The **Helios** meter series use ultrasonic measurement technology and remote communications to provide a compact and precise smart gas metering solution

- Domestic, Commercial & Industrial
- Automatic commissioning
- Remote disconnect / reconnect
- Tamper alarms / meter events



ATLAS SERIES

The **Atlas** meter series offers a comprehensive range of smart meters to satisfy all market requirements, and provide value adding services

- Domestic, Commercial & Industrial
- Automatic commissioning
- Remote Disconnect / Reconnect
- Tamper alarms / meter alarms



CLARITI

Clariti is a web-based energy portal and reporting tool for consumers and utilities

- Rich user experience with web apps, mobile apps & notifications
- Suitable for domestic or large scale consumers
- Branded to corporate identity



iBO

Interactive Back Office (iBO) is a utility-grade meter data management System (MDMs)

- Full Validation, Estimation and Editing capability
- Designed for contestable energy markets



STORM

Storm is a highly scalable head end system for reading, commissioning and provisioning of meters

- Elastic and scalable - read 1 meter or 1 million meters
- Automatically commission and provision meter services
- Remote firmware upgrades and configuration

GLOBAL PRESENCE



Contact Information

EDMI Limited - Headquarters

47 Yishun Industrial Park A, Singapore 768724

Tel: +65 6756 2938

Email: sales-singapore@edmi-meters.com

