

# HD18

## Customer Interface Unit

EDMI introduces a new generation of customer interface unit, the HD18, following the success of HD16 and HD14. This handheld unit is capable of the full STS prepayment functionality. Users are now able to have better ownership of their energy consumption remotely.



## Key Features



STS  
COMPLIANT



MULTIPLE  
ALARM INDICATOR



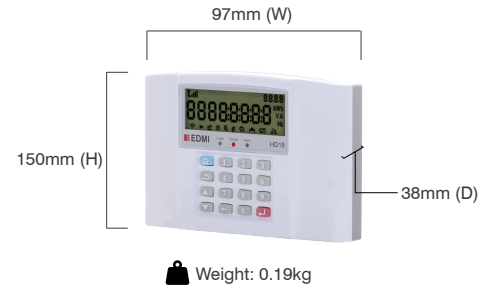
DISPLAY VARIANCE



AUTO RECONNECT

# HD18

## Customer Interface Unit



### Communications

The HD18 can be fitted with one of the following communication options:

- Radio Frequency

Open air communication distance > 100m

Frequency Bands: 433 MHz and 915 MHz

Transmit power: 17dBm (50mW)

Voltage & Power Supply

- Operating Voltage: 3.3V (2 AA battery)/5V(DC)

- Operating Current: <24 mA (Rx) <60mA (Tx)

- Standby Current <120 uA

Meter Type Compatibility

- Abacus: Mk32, Mk32H/Mk7M

- Atlas: Mk10D, Mk10E

- Mk10M

### Environmental

- Specified operating range:

  - 10°C to +45°C

- Operating limit range:

  - 25°C to +55°C

- Storage range limit:

  - 25°C to +70°C

- Relative humidity:

  - Up to 95% non-condensing

- Ingress protection: IP51

### Display

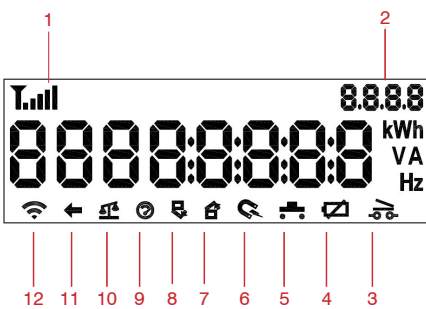
- 8 Character of seven-segment display

- Option for backlight

### Keypad

- Silicon keypad

### LCD Display



1 Signal Strength

2 Page Indicator

3 Meter Relay Status

4 CIU Battery Indicator

5 Meter Program Key Indicator

6 Magnetic Detection

7 Meter Lid Cover Tamper

8 Meter Terminal Cover Tamper

9 Overload

10 Unbalanced Load

11 Reverse Power

12 CIU Connection Status

### EDMI Limited (Headquarters)

47 Yishun Industrial Park A, Singapore 768724

Tel: +65 6756 2938 Fax: +65 6756 0125

Email: sgmarketing@edmi-meters.com

sgtechsupport@edmi-meters.com

www.edmi-meters.com

