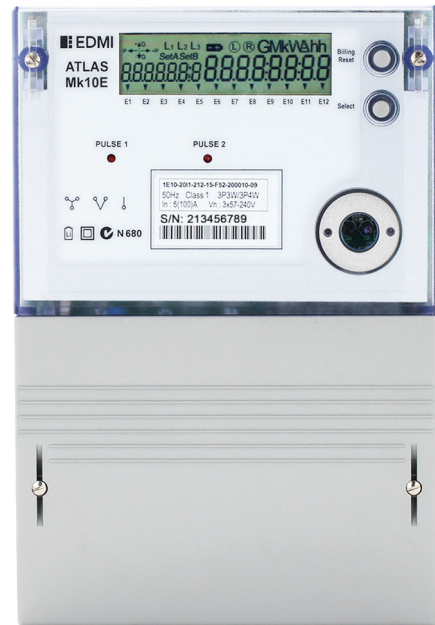


# Mk10E

**ATLAS** – Class 0.5S and Class 1

Three Phase CT/WC Smart Meter

Built on the advanced Atlas metering platform, the Mk10E has a Class 0.5S measurement engine with many enhancements including smart grid solutions, high data storage, data processing, UPS configuration and enhanced communications capabilities.



## I Key Features

**AMI**

AMI READY



HIGH ACCURACY



CT-WC CONNECTED



MULTIPLE COMMS OPTIONS



MEASURE EVERYTHING



UPGRADEABLE



ANTI TAMPER



UPS

# Mk10E

ATLAS - Class 0.5S and Class 1

## Three Phase CT/WC Smart Meter



### Standards and Compliance

- Class 0.5S and Class 1
- IEC 62052-11, 62053-21, \*62052-31, 62053-22, 62053-23, \*62053-24
- AS 62052.11, 62053.21, 62053.22, 62053.23
- NMI M6

### Measurement

- 3 phase 3 wire
- 3 phase 4 wire
- Option for neutral current measurement

### Voltage

- Nominal voltage: 57.7V – 240V
- Operating range: 52V – 290V
- Withstand: Up to 290V
- Burden: IEC 62053-61 compliant

### Auxiliary Supply Options

- 57.7V - 240V Auxiliary Supply
- Battery UPS

### Current

- CT range: 1/4A, 1/10A, 5/6A, 5/10A, 5/20A
- CT limit: 20 x I<sub>max</sub> for 0.5 seconds
- WC range: 5/100A, 10/100A
- Burden: <0.5VA/phase

### Frequency

- 45Hz - 65Hz

### Inputs/Outputs Configuration

- Up to 4 independently isolated I/O
- Options include: Passive/Active inputs, S0/BOSFET/Relay outputs
- Passive input voltage: 5V, 12V, 48V, 110V, 240V
- Active input voltage: 12V (common ground)
- S0 Output: 27V, 27mA maximum
- BOSFET output: 240V, 100mA maximum
- Relay output: 240V, 2A
- 2 Programmable LED indicators
- Programmable output pulse width: 1ms to 100ms

### Battery

- Internal battery

- Option for external for backup
- Option for UPS battery
- Option for additional Supercap (72 hours)
- Backup time: 10 years without power (Lithium Battery)

### Real-time Clock

- Accuracy (internal) within 15 seconds per month at 23°C

### Data Memory

- 2 MB of non-volatile memory

### Display

- Large 7 segment alphanumeric display with 10.7mm x 6.67mm digit size
- \*Large 14 segment alphanumeric display with 10.5mm x 5.1mm digit size
- Up to 60 user-defined screens of any meter parameter
- Definable enunciators
- Display available without main power
- LED Backlight Option

### Measured Values

- 3 elements 4 quadrants
- Import/Export/Absolute Wh, varh and VAh
- Fundamental Wh
- Per quadrant Wh, varh and VAh
- Phase A, B, C and Total
- W, var, VA, Vrms, Irms
- Power factor, frequency, phasor angles
- Supports ripple control/AFLC

### Power Quality Indication

- Total Harmonic Distortion (THD)
- Unbalance (sequence components)
- Option for live waveform display
- Sag/Swell
  - 5 Cycle resolution
  - Records time/date/phase/duration/average and worst excursion
  - Programmable trigger levels

### Load Survey/Profile

- Over 5000 days storage (2 channels, 30-minute intervals)

- Supports Advanced Demand Management (ADM) with prioritised rules
- AMI ready
- Up to 32 channels and 4 independent surveys
- Intervals programmable from 1 to 60 minutes
- Energy, instantaneous readings, pulsing input as channel sources
- Ability to store average/minimum/maximum values for interval duration

### Time of Use

- Up to 8 rates plus unified rate
- Up to 32 separate import and export registers
- Daily, weekly, monthly, yearly and special days
- Up to 200 programmable special days
- Up to 61 previous billing periods plus billing totals
- Block or rolling maximum demand
- Time of maximum demand
- Energy, pulsing inputs

### Calendar

- Supports Daylight Saving time
- Supports Gregorian or Persian calendars

### Tamper Detection and Alarms

- Provision for sealing with conventional wire or plastic seals
- Bypassing current and reverse current detection
- Advanced tamper detection and logging
- Pre-programmed alarms for meter self-check
- Alarms trigger LEDs, enunciators, relay outputs or communications event
- Alarms are stored in event logs
- Option for fixed-threshold magnetic tamper detection
- \*Option for high-sensitivity 3D magnetic tamper detection with configurable threshold
- Source impedance monitoring

### Security

- Multi-level security (username and password including encrypted log-in)

- Up to 7 independent security levels
- Up to 6 individual users
- AES128 bit encryption

### Communications

- Up to 3 independently working communication ports:
  - Optical port: FLAG (IEC 62056-21) or ANSI Type 2 (ANSI C12.18)
  - RS-232 with modem power supply (2G/3G/4G LTE supported)
  - RS-485 multi-drop (2 or 4-wire RJ45 or 2-wire screw terminal)
- UDP/IP GPRS/PPP capable
- Compatible with MV-90™
- Supports Function Based Setup

### Protocol

- EDM command line
- DLMS
- MODBUS

### Software

- EDM EziView software available for meter programming and reading (Windows® compatible)
- EDM MultiDrive software available for large scale AMI and AMR solutions (Windows® compatible)
- Supported by many popular third-party multi-vendor AMR systems

### Environmental

- Specified operating range: -25 °C to +60 °C
- Operating range limit: -40 °C to +70 °C
- Storage range limit: -40 °C to +80 °C
- Relative humidity: Up to 95% non-condensing for 30 days
- Ingress protection: IP54
- Protective Class II
- Surge Test: 5kV
- Impulse Test: 12kV

Specifications with \* symbol available in manufacturing codes with prefix 1Ex3

## EDMI Limited (Headquarters)

47 Yishun Industrial Park A, Singapore 768724

Tel: +65 6756 2938 Fax: +65 6756 0125

Email: [marketing@edmi-meters.com](mailto:marketing@edmi-meters.com)

[techsupport@edmi-meters.com](mailto:techsupport@edmi-meters.com)

[www.edmi-meters.com](http://www.edmi-meters.com)

