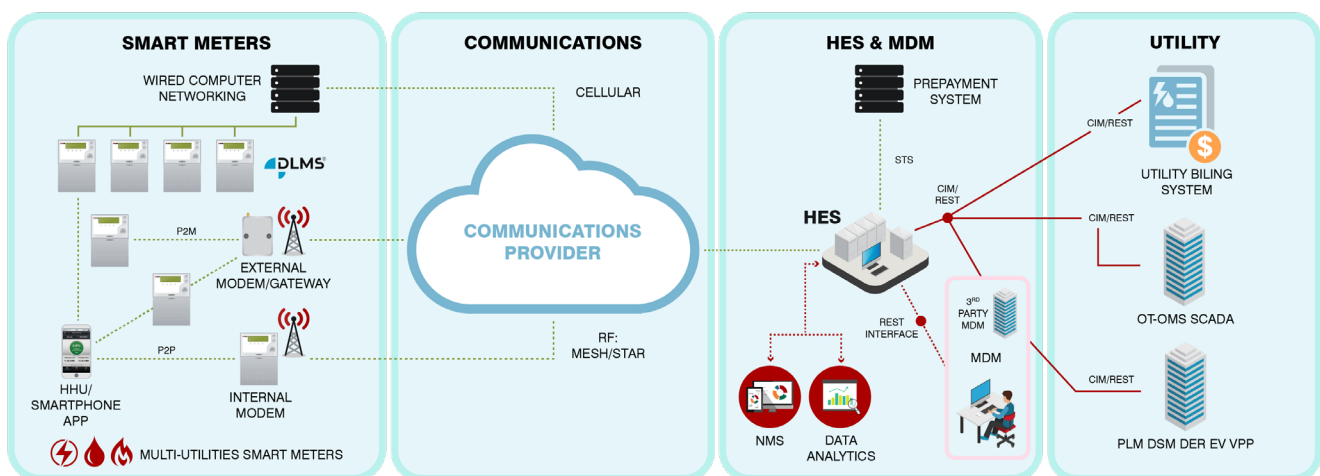




On-Premise/Cloud Based Head End System
for AMR and AMI Deployments



Storm is a complete meter data normalisation and meter management software package. The software allows the collection of large amount of data from utility meters or measuring devices in an AMR/AMM/AMI system using various communications technologies.

I Key Features



FLEXIBLE



REMOTE METER
MANAGEMENT



HIGH
PERFORMANCE



SUPPORT MULTI
VENDOR PROTOCOL



HIGH
SECURITY

On-Premise/Cloud Based Head End System for AMR and AMI Deployments

Meter Data

- Bi-directional communication
- Audit trail and event and alarm logging
- Encryption of data for secure communication
- Setting of smart meter configurable parameters
- Communication device status and history
- Network information
- Settings of parameters for time of day (TOD/TOU) billing
- Billing date
- Clock setting
- Load curtailment limit - current limit, power limit
- Lock out period for relay
- Keys setting
- Dynamic data model
- Data repository

Command Management

- Relay connect/disconnect
- Meter configuration
- Commissioning/decommissioning
- Firmware upgrade
- Prepayment tokens
- Clock synchronization

Measured Data Collection

- Storage and recovery of measured data
- Retrieval of time of use data. The system supports multi-register billing requirements, daily, monthly and three-monthly billing cycles and snapshots and interval values
- Retrieval of interval data including multi-utility consumption data

- Retrieval of power quality event data
- Retrieval of maximum, minimum and average voltage, current and other electrical quantities

Scheduling

- Robust scheduling engine to trigger functions via timed schedules, on an ad hoc basis or based on events received from meters
- Supports server or meter initiated connections

B2B Interface

- Includes file/database export and Application Programming Interface (API)

Security

- All data are encrypted using High Level Security (HLS)
- Secure Sockets Layer (SSL) protocol shall be used for IP based connection
- For user interface, web traffic is over https (TLS/SSL encryption over HTTP)

Reporting

- List of devices interactions and exports
- Communication with Data Concentrator Unit and Gateway
- Alarms and Events
- Communication link failure with nodes/end points
- Network failure
- Retry attempts
- Missed periodic reading
- Unlocks all the functionality of the feature rich EDM I Atlas smart meters

Architecture and Performance

- Supports multiple communications servers load balancing to allow scalability and availability
- Thick and thin clients for supporting multiple concurrent users
- Ability to export data to other systems via file/DB and other standard interfaces
- API's to allow full control of functionality from back office systems
- Can be tailored to match operational constraints
- Supports both on-premise and cloud-based deployments
- Designed to operate in a utility environment with 24/7 up time
- Capable to integrate with MQTT/JSON/REST
- Support virtual machine, clustering and other HA technology so it can be integrated with the latest DR and business continuity planning

Operating System

- Runs on virtual machines
- Microsoft SQ: server database

Hardware

- 38 Virtual machines (minimum)
- 422 GB RAM, 1.9 TB hard disk

Function Overview

B2B INTERFACE					
TOU	INTERVAL DATA	PQ DATA / EVENTS	DATA MODEL	REPORTING	INFO DISPLAY
MEASURED DATA MANAGEMENT			METER DATA		
METER SETUP		FIRMWARE		METER EVENTS	
COMMAND MANAGEMENT					
PROTOCOLS		CONNECTION MANAGEMENT		COMMISSIONING	
NETWORK MANAGEMENT					
SECURITY					

SCHEDULING

SCHEDULING

EDMI Limited (Headquarters)

47 Yishun Industrial Park A, Singapore 768724
 Tel: +65 6756 2938 Fax: +65 6756 0125
 Email: sgmarketing@edmi-meters.com
 sgtechsupport@edmi-meters.com

www.edmi-meters.com

