



# GS-68B

Class 1.5

Residential SMETS2  
Dual Band Gas Meter

Designed for the residential smart meter rollout in Great Britain, the GS-68B is a variant of our second generation SMETS2 compliant gas meters.

Operating at Zigbee 2.4GHz and 868MHz and GBCS compliant, this ultrasonic meter is highly accurate and tamper proof and can work in credit or prepayment mode.



## Key Features



HIGH ACCURACY



ANTI TAMPER

P-PAY

PREPAYMENT



UPGRADEABLE



LARGE LCD DISPLAY

IP67

SUPERIOR INGRESS PROTECTION



LOW POWER CONSUMPTION

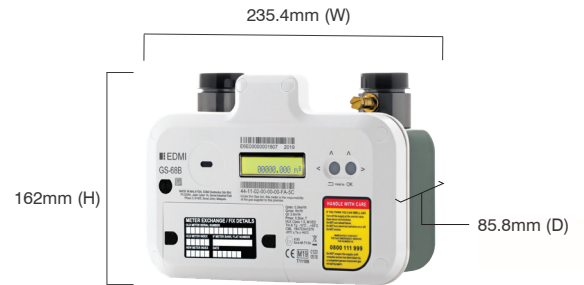


ZIGBEE COMPLIANT

# GS-68B

Class 1.5

## Residential SMETS2 Dual Band Gas Meter



Weight: 2.2kg

### Standards and Compliance

- Class 1.5
- EN 14236:2018 (MID) Directive 2014/32/EU  
Ultrasonic domestic gas meters
- SMETS2 Compliant
- Smart Meter Certified to ATEX Zone 2
- GBCS v3.2, SMETS2 v4.2
  - CPA v1.2
  - Zigbee 1.4b
  - Welmec 7.2 2018
  - RED EN 300.328
  - RED EN 301.489
  - RoHS 2012
  - WEEE 2013

### Measurement

- Measurement accuracy: 0.04 to 0.6m<sup>3</sup>/h < +/- 3%  
0.60 to 6m<sup>3</sup>/h < +/- 1.5%

### Pressure Loss

- Less than 200Pa at 6m<sup>3</sup>/h (including valve)

### Gas Supply

- Natural Gas H, L and E
- Meter capacity: 6m<sup>3</sup>/h

### Input Measurement

- Single bounce speed of sound time measurement

### Disconnect Valve

- Brushless DC-powered motor <0.1 l/h leak rate
- Fast closing valve
- Gas seal compliant EN 549
- Oil-less construction
- Local/remote operation

### Battery

- Main Cell Type Lithium (Replaceable)
- Backup: Super capacitor

### Real-time Clock

- Accuracy: < +/-5 secs/month

### Calendar

- Backup time 3 days without main battery

### Display

- Large 16 x 2-character display
- Display digit size: 5.3 x 3.3mm
- Multiple screens of meter parameter
- Backlight standard

### Materials

- Metal chassis: Alu-Zinc hot-dip galvanized steel
- Smart index: Polycarbonate
- Ultrasonic unit: Polybutylene terephthalate flow path, sensor and PCB

### Connections

- Connections: 1"BS 746 couplings 6" centres
- Test point

### Processor

- Low power
- Hardware cryptography
- Back up software images for high reliability

### Load Survey/Profile

- Up to 2.0 Megabytes of non-volatile memory
- 13 months of half hourly data
- 48 half hourly intervals

### Tamper Detection and Alarms

- Metrological seals to gas meter
- Communications and battery cover tamper evident seals
- Meter tamper detection alarm
- Alarms programmable to display LCD status and communications event

### Prepayment

- Credit or debit operation
- UTRN (Unique Transaction Reference Number) per GB specifications
- Minimum charges, standing charges and emergency credit
- Configurable warnings and indicators
- External debt repayment x2

### Communications

- Zigbee 2.4GHz
- Zigbee 868MHz
- GBCS object support

### Environmental

- Operating range:  
-10 °C to +55 °C
- Storage range:  
-20 °C to +60 °C
- Relative humidity:  
95%
- Ingress protection: IP67
- Corrosion: 1000h salt spray compliant
- Resistant to high temperature according to EN 14236

## EDMI Europe Limited

Form 1, 17 Bartley Wood Business Park,  
Bartley Way, Hook, Hampshire,  
RG27 9XA, United Kingdom  
Tel: +44 (0)1256 830 990  
Email: sales.europe@edmi-meters.com  
servicedesk.europe@edmi-meters.com

www.edmi-meters.com

