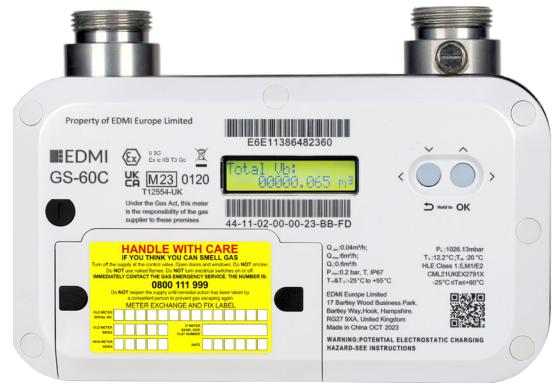




GS-60C

Class 1.5

Residential SMETS2 Gas Meter



Designed for the residential smart meter rollout in Great Britain, the GS-60C is the third generation of our SMETS2 compliant gas meters.

Operating at Zigbee 2.4GHz and GBCS compliant, this thermal-mass gas meter is highly accurate and tamper proof and can work in credit or prepayment mode.

Key Features



HIGH ACCURACY



ANTI TAMPER

P-PAY

PREPAYMENT



UPGRADEABLE



LARGE LCD DISPLAY

IP67

SUPERIOR INGRESS PROTECTION



LOW POWER CONSUMPTION



ZIGBEE COMPLIANT

GS-60C

Class 1.5

Residential SMETS2 Gas Meter



Standards and Compliance

- UK GBCS and SMETS2 compliant
- UKCA MIR regulations 2016 certified
- EN 14236:2018 domestic gas meters
- UKEX (ATEX) Zone 2
- GBCS v3.2
- SMETS2 v4.2
- CPA v1.2
- Zigbee 1.4
- RED EN 300.328 and EN 301.489
- RoHS 2012
- WEEE 2013

Measurement

- Micro thermal mass measurement technology
- Qmin: 0.04 m³/hr, Qt: 0.6 m³/hr, Qmax: 6 m³/hr
- MIR accuracy Class 1.5: 0.04 to 0.6m³/h < +/- 3%
0.6 to 6m³/h < +/- 1.5%

Pressure Loss

- Less than 200Pa at 6m³/h (including valve)
- Measurements reported at standard conditions 12.2°C and 1026 mbar

Gas Supply

- Natural Gas H, L and E
- Meter capacity: 6m³/h
- Up to 23% Hydrogen Blend

Disconnect Valve

- Brushless DC-powered motor <0.04 l/h leak rate
- Gas seal compliant EN549
- Oil-less construction
- Local/remote operation

Battery

- Main cell type lithium-thionyl chloride (Replaceable)
- Backup: Super capacitor

Time

- Real-time clock
- Accuracy: < +/-5 secs/month
- Half hour billing calendar

Display

- Large 16 x 2-character display
- Display digit size: 5.3 x 3.3mm
- Multiple screens of meter parameter
- Backlight standard

Materials

- Metal chassis: Alu-Zinc coated steel
- Smart index: Polycarbonate
- MEMS based sensor for thermal-mass flow measurement

Connections

- Connections: 1"BS 746 couplings 6" centres
- Test point

Processor

- Low power
- Hardware cryptography
- Back up software images for high reliability

Load Survey/Profile

- 13 months of half hourly data
- 48 half hourly intervals

Tamper Detection and Alarms

- Metrological seals to gas meter
- Battery cover tamper detection and tamper evident seals
- Programmable alarms displayed on LCD and via communications event

Prepayment

- Credit or debit operation
- UTRN (Unique Transaction Reference Number) per GB specifications
- Minimum charges, standing charges and emergency credit
- Configurable warnings and indicators
- External debt repayment x2

Communications

- Zigbee SEP 1.4
- GBCS and SMETS object support

Environmental

- Operating range:
-25°C to +55°C
- Storage range:
-25°C to +55°C
- Relative humidity: 95%
- Ingress protection: IP67
- Corrosion: 500h salt spray compliant

EDMI Europe Limited

Form 1, 17 Bartley Wood Business Park,
Bartley Way, Hook, Hampshire,
RG27 9XA, United Kingdom
Tel: +44 (0)1256 830 990
Email: sales-europe@edmi-meters.com
servicedesk.europe@edmi-meters.com

www.edmi-meters.com

