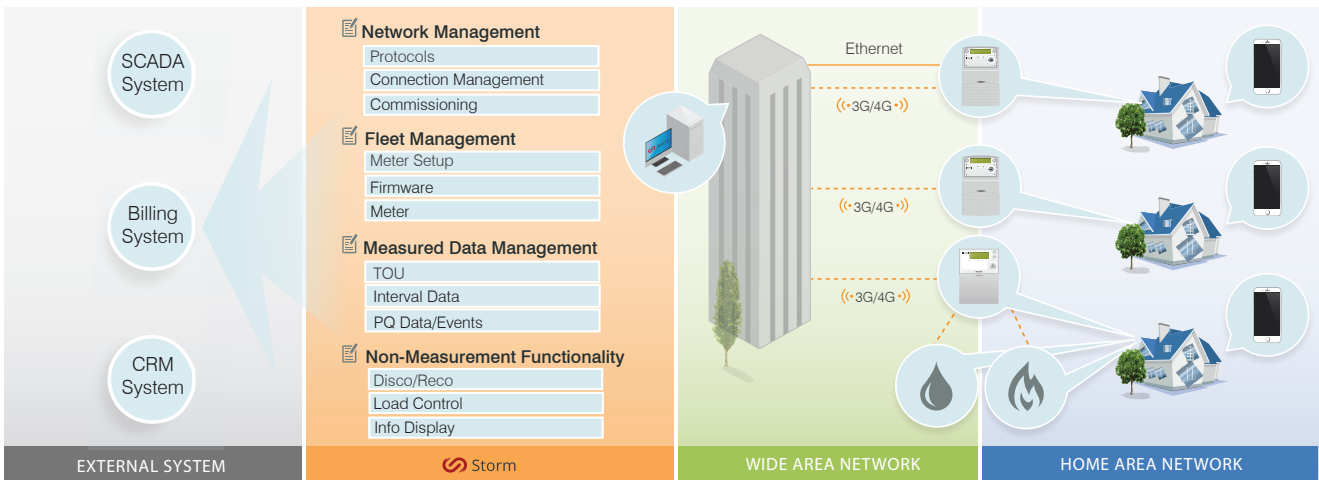


SOFTWARE

Storm

Next Generation, Hyper Scalable Head End System for AMI Deployments



Storm is a next generation head end, which radically simplifies the installation, management and operation of massive meter fleets through state-of-the-art cloud computing technology. The software system also provides secure, accurate, reliable data to a wide array of utility billing and analysis systems. Storm is available in a SaaS (Software as a Service) model, delivered on Microsoft Azure cloud computing infrastructure.

Key Features



Next Generation, Hyper Scalable Head End System for AMI Deployments

Network Management

- Reliable communication with meters
- Compatible GPRS, 3G, 4G
- Persistent and non-persistent communication with meters
- Bi-directional connection establishment
- Dynamic IP support
- Carrier network load balancing

Fleet Management

- Meter information
- Automatic verification of meter fleet configuration
- Device installation tracking
- Device filtering and tagging
- Configuration management
- Device firmware management

Measured Data Management

- Guaranteed Data Delivery
- Retrieval of time of use data. The system supports multi-register billing requirements, daily, monthly and three monthly billing cycles and snapshots and interval values
- Retrieval of interval data including energy, water and gas consumption data
- Retrieval of power quality event data including Sag/ Swell, Total Harmonic Distortion, Unbalance, over current exceedance
- Retrieval of maximum, minimum and average voltage, current and other electrical quantities
- Read instantaneous values

Non-Measurement Functionality

- Connect / disconnect
- Load control
- Time Synchronising

Function Overview



Scheduling

- Robust scheduling engine to trigger functions via timed schedules, on an adhoc basis or based on events received from meters
- Supports server or meter initiated connections

Application Management

- Communication monitoring
- Performance monitoring
- Notifications
- Audit trail

B2B Interface

- Restful web services
- File export / import

More Data in Less Time

- Nightly Reading Window: >1 million reads and exports per hour
- High Frequency Reads - 5 to 15 minutes collections in addition to nightly window
- Real-Time Data Streaming (1 to 10 second intervals) for Customer Engagement, Usage Management, Demand Response & Other Applications

Resilient and Scalable

- Scalability
- Reduced Infrastructure Cost (pay for what you use, when you use it - not peak usage all the time)
- Reduced IT operations costs (platform, and software management and maintenance costs included in the solution)
- Built in Disaster Recovery and High Availability

Easy to Use

- Automatic Meter Commissioning
- Single Sign On (integrated with clients corporate Active Directory)
- Fully compliant with advanced distributor load control requirements
- Native support for AMI demand response
- Browser based User Interface
- Real time meter diagnostics
- "Object based" meter configuration through "Business Services"

Easy to Change

- Dynamic Service enablement (enable / disable, upgrade business services)
- Low cost trials; (e.g. Realtime data, secondary push, analytics)
- Automated Meter Configuration and Firmware Upgrade

Easy to Integrate

- Client controlled user authentication (through Microsoft Active Directory & ADFS)
- Easy back office systems integration through Web centric APIs and data formats (REST & JSON)
- Option for "Guaranteed Data Delivery"

Storm Mobile

- iOS / Android field tool
- Bluetooth Optical Read Head
- Support online and offline field operations, including meter reading, firmware & configuration changes, field diagnostics
- Automatic data synchronisation

EDMI Limited (Headquarters)

47 Yishun Industrial Park A, Singapore 768724
 Tel: +65 6756 2938 Fax: +65 6756 0125
 Email: marketing@edmi-meters.com
techsupport@edmi-meters.com

www.edmi-meters.com

