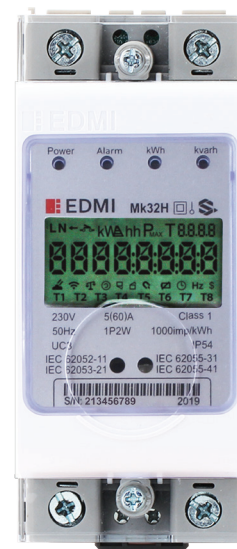


# Mk32H

**ABACUS** – Class 1 and Class 2

Advanced Single Phase  
DIN Rail Meter

Designed for residential use, Mk32H is a DIN Rail single phase meter with integrated 100A UC3 compliant relay. It is able to operate in either STS compliant prepaid mode or post-paid mode. Mk32H can operate with the EDM I CIU (Customer Interface Unit) - HD18 wirelessly as a split meter as well as operate with EDM I gateway – GW30 and the EDM I Head End System – MultiDrive as a complete AMI system.



## Key Features



STS  
COMPLIANT



DISCONNECT  
RELAY



DIN RAIL



ANTI TAMPER



FIRMWARE  
UPGRADE



RF  
WIRELESS  
TRANSCIVER



NEUTRAL CURRENT  
MEASUREMENT



SMART READY

# Mk32H

**ABACUS** - Class 1 and Class 2

Advanced Single Phase DIN Rail Meter



## Standards and Compliance

- Class 1 and Class 2
- IEC 62052-11, 62053-21, 62053-23, 62055-41

## Measurement

- 1 phase 2 wire (optional neutral current measurement)

## Voltage

- Nominal voltage: 220V - 240V
- Operating range: 0.5Un to 1.2Un
- Withstand range: 0V to 456V
- Impulse voltage: 6kV

## Current

- WC range: 5/60A, 10/60A, 5/100A, 10/100A
- WC limit: 30 x Imax for 0.5 cycles
- Phase current measurement sensor: Shunt
- Neutral current measurement sensor CT

## Terminal

- Terminal cross-section: 63.59mm<sup>2</sup>

## Power Consumption

- Voltage circuit: < 2W, 10VA @ Vn
- Current circuit: < 2.5VA @ In

## Frequency

- 50Hz/60Hz

## Inputs/Outputs Configuration

- Up to 4 x LED indicators
- Up to 2 x outputs

## Relay

- Internal disconnect relays (80A or 100A)

## Battery

- Internal lithium battery (3.6V)
- Backup time: 5 years without power (lithium battery)

## Real-time Clock

- Precision clock accuracy: < 5ppm (15 seconds per month) at 23°C

## Data Memory

- 2MB of non-volatile memory

## Display

- 8 Characters of seven-segment display (7.8mm x 3.8mm) with 4 ID digits (3.3mm)
- Display available without main power
- Option for backlight

## Measured Values

- 1 element 4 quadrants
- Import/Export/Absolute Wh, varh and VAh
- Per quadrant: varh
- W, var, VA, Vrms, Irms
- Power factor, frequency

## Load Survey/Profile

- Up to 8 channels and 2 independent surveys
- Interval programmable from 1 to 60 minutes
- Energy, instantaneous readings channel sources
- Average/minimum/maximum values for interval duration

## Time of Use

- Up to 8 rates plus unified rate
- Up to 8 separate import and export registers
- Daily, weekly, monthly, yearly and special days
- Up to 48 previous billing periods plus billing totals
- Block maximum demand
- Time of maximum demand

## Calendar

- Supports Daylight Saving Time

## Tamper Detection and Alarms

- Provision for sealing with conventional wire or plastic seals
- Reverse current detection
- Line and neutral current unbalance detection
- Meter cover and terminal cover detection available without main power
- Faulty load relay detection
- Overload detection

- Magnetic tamper detection (optional)
- Alarms are stored in event logs

## Security

- Multi-level security (username and password including encrypted log-in)
- Up to 10 independent security levels
- Up to 8 individual users

## Operation Mode

- Postpaid/Prepaid

## Communications

- Up to 2 independently working communication ports:
  - Optical port: FLAG (IEC 62056-21)
  - RF (260MHz - 930MHz) or RS485 (2-wire)

## Protocol

- EDMI command line

## Environmental

- Specified operating range:
  - 25°C to +55°C
- Operating range limit:
  - 40°C to +70°C
- Storage range limit:
  - 40°C to +85°C
- Relative humidity:
  - Up to 75% mean, 95% non-condensing for 30 days
- Ingress protection: IP54 (without suction)

## EDMI Limited (Headquarters)

47 Yishun Industrial Park A, Singapore 768724

Tel: +65 6756 2938 Fax: +65 6756 0125

Email: [marketing@edmi-meters.com](mailto:marketing@edmi-meters.com)

[techsupport@edmi-meters.com](mailto:techsupport@edmi-meters.com)

[www.edmi-meters.com](http://www.edmi-meters.com)

