

# EN11B

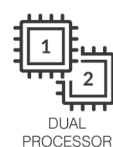
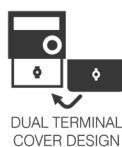
**NEOS** – Class 1 and Class 2

Single Phase Smart Meter

Built on the advanced NEOS metering platform, the EN11B is a single phase meter with integrated 100A UC3 compliant relay allowing remote disconnection and reconnection of electrical services. Flexible communication and I/O options are possible with the modular POD design.



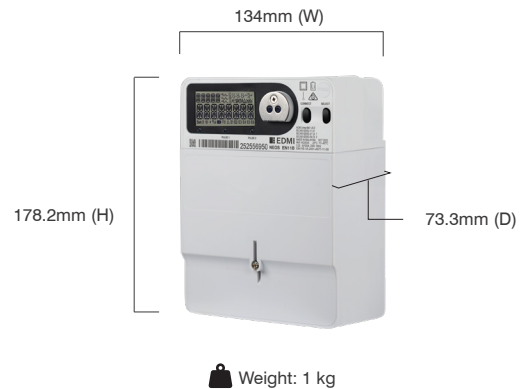
## Key Features



# EN11B

NEOS - Class 1 and Class 2

## Single Phase Smart Meter



### Standards and Compliance

- Class 1 Wh and Class 2 varh
- IEC 62052-11, 62052-21, 62052-31, 62053-21, 62053-24, 62054-21, 62059-32
- AS 62052.11, 62052.21, 62052.31, 62053.21, 62053.24, 62054.21
- EIPC 2010 Part 10 Schedule 10.8 (Data storage clauses)
- NM1 M13-1 2022

### Measurement

- 1 phase 2 wire

### Voltage

- Nominal voltage: 220V to 240V
- Operating range: 176V to 276V

### Current

- WC range: 5/100A, 10/100A
- Max voltage: 456V

### Safety

- Temperature monitoring
- Overvoltage category III (up to 3500m)
- Overvoltage category IV (up to 2000m)
- Insulation protective class II
- Surge voltage 6 kV
- Impulse voltage 12 kV (as per SPM1618)
- Overload current 128A (as per IEC 62052-31)
- Two terminal covers segregating mains terminals and SELV circuits
- Disconnect relay - failure detection

### Terminal

- Terminal hole diameter: 9.5mm
- Maximum 35mm<sup>2</sup> cable

### Power Consumption

- Voltage circuit:
  - Maximum consumption with full POD load: less than 12W or 20 VA | maximum consumption without accessories: less than 2W or 10VA
- Current circuit (Burden): <0.5VA/phase

### Frequency

- 50Hz/60Hz +/- 6% variation from fn for accuracy

### Inputs/Outputs Configuration

- Up to 3 x LED indicators
- Fixed I/O channel\*
- Expandable I/O with PODs
- Buzzer\*

### Relay

- 100A SCS, 80A LCS
- Relay failure detection

### Battery

- Replaceable lithium battery (550 mAh, 3.0V)
- Internal super capacitor\*
- Backup time: 10 years without power (lithium battery)

### Real-time Clock

- Clock accuracy: 15 seconds per month at 23°C
- High accuracy clock (optional)
- Supports Daylight Saving Time

### Data Memory

- 8MB of non-volatile memory
- EEPROM\*

### Display

- Starburst-segment alphanumeric display
- Display available without main power
- White LED backlight

### Measured Values

- 1 element 4 quadrants
- Import / Export
- Wh, varh and VAh
- Fundamental / Total power
- Vrms, Irms, Phase Angle, Frequency

### Load Survey/Profile

- Up to 64 channels and 4 independent surveys
- Intervals programmable from 1 to 60 minutes
- Energy, instantaneous readings, pulsing inputs, temperature as channel sources
- Ability to store average/minimum/maximum/boundary values for interval duration

### Time of Use

- Up to 8 rates plus unified rate
- Up to 32 separate import and export registers
- Daily, weekly, monthly, yearly and special days
- Up to 200 programmable special days
- Up to 61 previous billing periods plus billing totals
- Block or rolling maximum demand
- Time of maximum demand
- Energy, Pulsing Inputs

### Tamper Detection and Alarms

- Terminal sealing with conventional wire or plastic seals
- Reverse current detection
- Cover removal
- Magnetic field detection

### Security

- Multi-level security (username and password including encrypted log-in)
- Up to 7 independent security levels
- Up to 6 individual users

### Communications

- Optical port: FLAG / ANSI (IEC 62056-2)
- Multiple communication options available

### Protocol

- EDML command line

### Environmental

- Specified operating range:
  - 25°C to +60°C
- Operating range limit:
  - 40°C to +70°C
- Storage range limit:
  - 40°C to +80°C
- Relative humidity:
  - Up to 75% mean, 95%, non-condensing for 30 days
- Ingress protection: IP54
- Solar Radiation IEC 62052-11 / 60068-2-5

\* Optional

#### EDMI Limited (Singapore)

47 Yishun Industrial Park A,  
Singapore 768724

#### EDMI Pty Ltd (Australia)

Level 7, 51 Alfred Street,  
Fortitude Valley, Queensland  
Australia 4006

#### EDMI Europe Limited (United Kingdom)

Form 1, 17 Barley Wood  
Business Park, Bartley Way,  
Hook, Hampshire RG27  
9AXA, United Kingdom

#### EDMI America Inc. (USA)

One City Plaza, Suite 1301,  
421 Fayetteville Street,  
Raleigh, North Carolina,  
27601 United States

[www.edmi-meters.com](http://www.edmi-meters.com)



Visit our website at [www.edmi-meters.com](http://www.edmi-meters.com) to find our other locations.

Copyright © 2025 EDMl Group. All Rights Reserved. All trademarks are the property of their respective holders. EDMl Group continuously develops its products and solutions and reserves the right to modify specifications contained herein without notice.