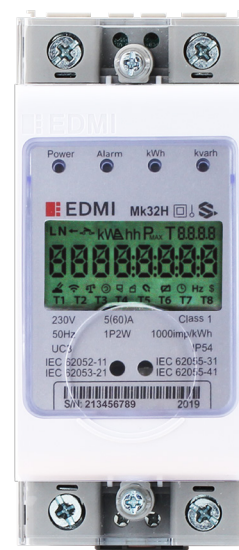


Mk32H

ABACUS – Class 1 and Class 2

Advanced Single Phase
DIN Rail Meter

Designed for residential use, Mk32H is a DIN Rail single phase meter with integrated 100A UC3 compliant relay. It is able to operate in either STS compliant prepaid mode or post-paid mode. Mk32H can operate with the EDM I CIU (Customer Interface Unit) - HD18 wirelessly as a split meter as well as operate with EDM I gateway – GW30 and the EDM I Head End System – MultiDrive as a complete AMI system.



Key Features



STS
COMPLIANT



DISCONNECT
RELAY



DIN RAIL



ANTI TAMPER



FIRMWARE
UPGRADE



RF WIRELESS
TRANSCIVER



NEUTRAL CURRENT
MEASUREMENT

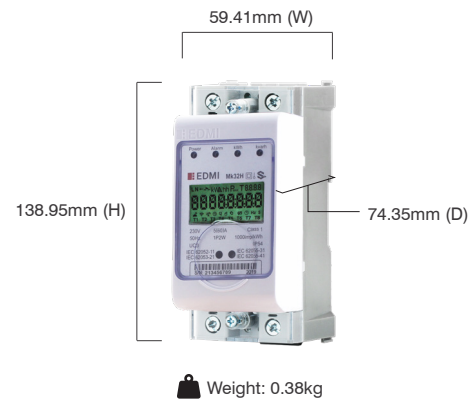


SMART READY

Mk32H

ABACUS - Class 1 and Class 2

Advanced Single Phase DIN Rail Meter



Standards and Compliance

- Class 1 and Class 2
- IEC 62052-11, 62053-21, 62053-23, 62055-41

Measurement

- 1 phase 2 wire (optional neutral current measurement)

Voltage

- Nominal voltage: 220V - 240V
- Operating range: 0.5Un to 1.2Un
- Withstand range: 0V to 456V
- Impulse voltage: 6kV

Current

- WC range: 5/60A, 10/60A, 5/100A, 10/100A
- WC limit: 30 x Imax for 0.5 cycles
- Phase current measurement sensor: Shunt
- Neutral current measurement sensor CT

Terminal

- Terminal cross-section: 63.59mm²

Power Consumption

- Voltage circuit: < 2W, 10VA @ Vn
- Current circuit: < 2.5VA @ In

Frequency

- 50Hz/60Hz

Inputs/Outputs Configuration

- Up to 4 x LED indicators
- Up to 2 x outputs

Relay

- Internal disconnect relays (80A or 100A)

Battery

- Internal lithium battery (3.6V)
- Backup time: 5 years without power (lithium battery)

Real-time Clock

- Precision clock accuracy: < 5ppm (15 seconds per month) at 23°C

Data Memory

- 2MB of non-volatile memory

Display

- 8 Characters of seven-segment display (7.8mm x 3.8mm) with 4 ID digits (3.3mm)
- Display available without main power
- Option for backlight

Measured Values

- 1 element 4 quadrants
- Import/Export/Absolute Wh, varh and VAh
- Per quadrant: varh
- W, var, VA, Vrms, Irms
- Power factor, frequency

Load Survey/Profile

- Up to 8 channels and 2 independent surveys
- Interval programmable from 1 to 60 minutes
- Energy, instantaneous readings channel sources
- Average/minimum/maximum values for interval duration

Time of Use

- Up to 8 rates plus unified rate
- Up to 8 separate import and export registers
- Daily, weekly, monthly, yearly and special days
- Up to 48 previous billing periods plus billing totals
- Block maximum demand
- Time of maximum demand

Calendar

- Supports Daylight Saving Time

Tamper Detection and Alarms

- Provision for sealing with conventional wire or plastic seals
- Reverse current detection
- Line and neutral current unbalance detection
- Meter cover and terminal cover detection available without main power
- Faulty load relay detection
- Overload detection

- Magnetic tamper detection (optional)
- Alarms are stored in event logs

Security

- Multi-level security (username and password including encrypted log-in)
- Up to 10 independent security levels
- Up to 8 individual users

Operation Mode

- Postpaid/Prepaid

Communications

- Up to 2 independently working communication ports:
 - Optical port: FLAG (IEC 62056-21)
 - RF (260MHz - 930MHz) or RS485 (2-wire)

Protocol

- EDM I command line

Environmental

- Specified operating range:
 - 25°C to +55°C
- Operating range limit:
 - 40°C to +70°C
- Storage range limit:
 - 40°C to +85°C
- Relative humidity:
 - Up to 75% mean, 95% non-condensing for 30 days
- Ingress protection: IP54 (without suction)

EDMI Limited (Singapore)

47 Yishun Industrial Park A,
Singapore 768724

EDMI Pty Ltd (Australia)

Level 7, 51 Alfred Street,
Fortitude Valley, Queensland
Australia 4006

EDMI Europe Limited (United Kingdom)

Form 1, 17 Barley Wood
Business Park, Bartley Way,
Hook, Hampshire RG27
9AXA, United Kingdom

EDMI America Inc. (USA)

One City Plaza, Suite 1301,
421 Fayetteville Street,
Raleigh, North Carolina,
27601 United States

www.edmi-meters.com



Visit our website at www.edmi-meters.com to find our other locations.

Copyright © 2025 EDM I Group. All Rights Reserved. All trademarks are the property of their respective holders. EDM I Group continuously develops its products and solutions and reserves the right to modify specifications contained herein without notice.