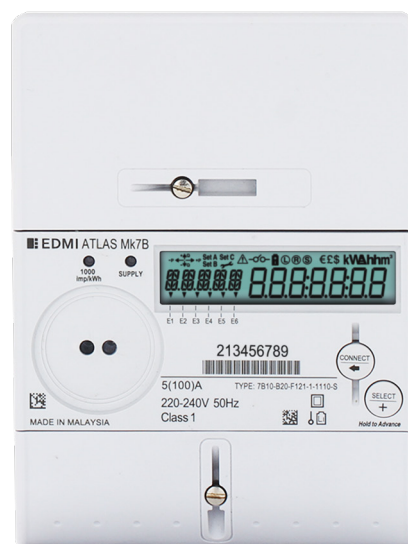


# Mk7B

**ATLAS** – Class 1 and Class 2

Single Phase Smart Meter with  
Disconnect Feature

Designed for residential and commercial use, the Mk7B can operate in credit or prepayment mode. It has a 100 Amp relay for remote connect/disconnect of electrical services.



## Key Features

**AMI**

AMI READY



DISCONNECT  
RELAY



MEASURE  
EVERYTHING



ANTI TAMPER



MODULAR  
COMMUNICATIONS



UPGRADEABLE

**P-PAY**

PREPAYMENT

# Mk7B

ATLAS - Class 1 and Class 2

## Single Phase Smart Meter with Disconnect Feature



### Standards and Compliance

- Class 1 and Class 2 (MID Class B and Class A)
- IEC 62052-11, 62053-21, 62053-23
- AS 62052.11, 62053.21, 62053.23

### Measurement

- 1 phase 2 wire

### Voltage

- Nominal voltage: 220V – 240V
- Operating range: 176V – 276V
- Withstand: 0 – 288V
- Burden: IEC 62053-61 compliant

### Current

- WC range: 5/100A, 10/100A
- WC limit: 7000A for 3 cycles
- Burden: <0.5VA/phase

### Frequency

- 45Hz – 65Hz

### Relay

- 100A IEC 62055-31 Annex C UC3

### Inputs/Outputs Configuration

- Built-in S0 of 27V, 27mA maximum or Relay output of 240V, 2A
- 2 Programmable LED indicators
- Programmable output pulse width: 1ms to 100ms
- Further I/O expansion via PODs

### Battery

- Internal battery
- Option for external battery
- Backup time of 10 years without power (Lithium Battery)

### Real-time Clock

- Accuracy (internal) within 15 seconds per month at 23°C

### Data Memory

- 2.1 MB of non-volatile memory

### Display

- Large 7 segment display
- Screen ID is full alphanumeric, 5 digits
- Display digit size: 9.3mm x 4.35mm
- Up to 60 user-defined screens of any meter parameter
- Definable enunciators
- Display available even without main power
- Option for backlight

### Measured Values

- 1 element 4 quadrants
- Import/Export/Absolute Wh, varh and VAh
- Fundamental Wh
- W, var, VA, Vrms, Irms
- Power factor, frequency, phasor angles
- Supports ripple control/AFLC

### Power Quality Indication

- Total Harmonic Distortion (THD)
- Sag/Swell
  - 5 Cycle resolution
  - Records time/date/phase duration/average and worst excursion
  - Programmable trigger levels

### Load Survey/Profile

- Over 7200 days (20 years) storage (2 channels, 30 minute intervals)
- Up to 32 channels and 2 independent surveys
- Intervals programmable from 1 to 60 minutes

- Energy, instantaneous readings, pulsing inputs as channel sources
- Ability to store average/minimum/maximum values for interval duration

### Time of Use

- Up to 8 rates plus unified rate
- Up to 32 separate import and export registers
- Daily, weekly, monthly, yearly and special days
- Up to 200 programmable special days
- Up to 61 previous billing periods plus billing totals
- Block or rolling maximum demand
- Time of maximum demand
- Energy, pulsing inputs

### Calendar

- Supports Daylight Saving time
- Supports Gregorian or Persian calendars

### Tamper Detection and Alarms

- Provision for sealing with conventional wire or plastic seals
- Reverse current detection
- Advanced tamper detection and logging
- Pre-programmed alarms for meter self-check
- Alarms trigger LEDs, enunciators, relay outputs or communications event
- Alarms are stored in event logs
- Option for magnetic tamper detection

### Security

- Multi-level security (username and password including encrypted-login)
- Up to 7 independent security levels
- Up to 6 individual users

### Prepayment

- Credit or debit operation
- Energy or currency based
- STS token compatible (IEC 62055-31)
- Multiple energy sources
- 8 rates per source
- External debt prepayment x 2
- Minimum charges, standing charges and emergency credit
- Configurable warnings and indicators

### Communications

- Up to 2 independently working communication ports:
  - Optical port: FLAG (IEC 62056-21) or ANSI Type 2 (ANSI C12.18)
  - POD-based interface for multiple communication options

### Protocol

- EDML command line
- DLMS

### POD System

- Interchangeable PODs for I/O and communications
- Sealable separately
- Multiple communication options available

### Software

- EDML EziView software available for meter programming and reading (Windows® compatible)
- EDML MultiDrive software available for large scale AMI and AMR solutions (Windows® compatible)
- Supported by many popular third-party multi-vendor AMR systems

#### EDMI Limited (Singapore)

47 Yishun Industrial Park A,  
Singapore 768724

#### EDMI Pty Ltd (Australia)

Level 7, 51 Alfred Street,  
Fortitude Valley, Queensland  
Australia 4006

#### EDMI Europe Limited (United Kingdom)

Form 1, 17 Barley Wood  
Business Park, Bartley Way,  
Hook, Hampshire RG27  
9AXA, United Kingdom

#### EDMI America Inc. (USA)

One City Plaza, Suite 1301,  
421 Fayetteville Street,  
Raleigh, North Carolina,  
27601 United States

[www.edmi-meters.com](http://www.edmi-meters.com)



Visit our website at [www.edmi-meters.com](http://www.edmi-meters.com) to find our other locations.

Copyright © 2025 EDML Group. All Rights Reserved. All trademarks are the property of their respective holders. EDML Group continuously develops its products and solutions and reserves the right to modify specifications contained herein without notice.