

Mk31E

PAPILLON - Class 1 and Class

Advanced Single Phase
Electronic Revenue Meter

Mk31E is another addition to the Papillon series which enhanced the Mk31 with a disconnect relay, additional communication capabilities, advance tampering features and a larger memory storage capacity.



Key Features

AMI

AMI READY



LARGE LCD
DISPLAY



ANTI TAMPER



UPGRADEABLE



MULTIPLE COMMS
OPTIONS



LARGE DATA
STORAGE

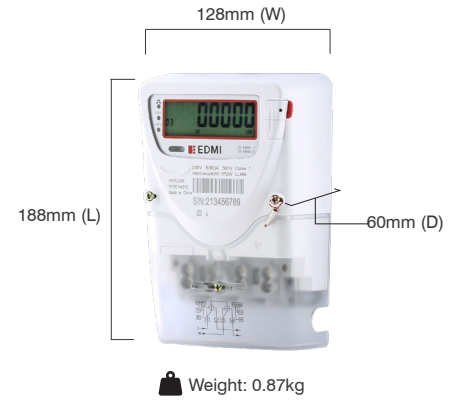


DISCONNECT
RELAY

Mk31E

PAPILLON - Class 1 and Class 2

Advanced Single Phase Electronic Revenue Meter



Standards and Compliance

- Class 1 and Class 2
- IEC 62052-11, 62053-21, 62053-23

Measurement

- 1 phase 2 wire
- 1 phase 3 wire
- Option for neutral current measurement
- Measurement sensor: CT/CT or CT/Shunt

Voltage

- Nominal voltage: 110V – 120V/220V - 240V
- Operating range: 0.6Un - 1.3Un (Max: 300V)
- Power consumption: <10VA 2W

Current

- WC range: 5/100A, 10/100A
- Power consumption: <2.5VA

Frequency

- 50Hz or 60Hz

Meter Constant

- 1600imp/kWh or 3200imp/kWh

Inputs/Outputs Configuration

- Pulsing LED for energy indication, LED for communication indication
- Energy pulsing output port, real-time clock (second) pulsing output port
- 3 spare LED indicators

Disconnect Relay

- 100A
- Magnetic latch type relay

Battery

- Internal battery

Real-time Clock

- Accuracy (internal) within 0.5 seconds per day at 23°C
- Built-in calendar, timing and leap year auto-adjustment functions
- Backup time: 5 years without power (Lithium Battery)

Data Memory

- Basic 2 MB storage and expandable to 8 MB

Display

- Display digit size: 16mm x 7.1mm
- Display available without main power
- Option for backlight

Measured Values

- Import/Export/ Absolute Wh, varh
- Voltage, current, line frequency, PF

Load Survey/Profile

- Up to 8 channels can be defined
- Each channel contains 9600 records

Time of Use

- Up to 8 rates plus unified, 14 intervals
- Weekdays, weekends, holidays and special days
- Tariff switch over through dry contact
- Auto/manual billing reset
- Billing reset through communication
- Storage of last 12 monthly billing data (energy)
- Max demand: kW, kVar
- Accumulated max demand
- Block or rolling maximum demand
- Customise interval from 5 - 255 minutes

Tamper Detection and Alarms

- Provision for sealing with conventional wire or plastic seals
- Reverse current detection
- Line and neutral current un-balance detection
- Meter cover and terminal cover detection
- Overload detection
- Magnetic tamper detection
- Measure energy in condition of absence neutral input
- Missing neutral detection
- Alarms LED, enunciator, tamper event logs

Communications

- Optical interface (IEC 62056-21) or modulated infrared interface port (DL/T 645)
- RS-485 for multi-drop communications
- Built-in low power RF module: (optional)
 - Open air communication distance >100m
 - Frequency 300MHz - 950MHz (configurable)
 - 17dB (50mW)
- Built-in PLC module (optional)
- Protocol: DL/T 645-2007
- Support remote firmware upgrade

Environmental

- Specified operating range:
 - 25°C to +60°C
- Operating range limit:
 - 40°C to +70°C
- Storage range limit:
 - 40°C to +70°C
- Relative humidity:
 - Up to 95% non- condensing for 30 days

EDMI Limited (Singapore)

47 Yishun Industrial Park A,
Singapore 768724

EDMI Pty Ltd (Australia)

Level 7, 51 Alfred Street,
Fortitude Valley, Queensland
Australia 4006

EDMI Europe Limited (United Kingdom)

Form 1, 17 Barley Wood
Business Park, Bartley Way,
Hook, Hampshire RG27
9AXA, United Kingdom

EDMI America Inc. (USA)

One City Plaza, Suite 1301,
421 Fayetteville Street,
Raleigh, North Carolina,
27601 United States

www.edmi-meters.com



Visit our website at www.edmi-meters.com to find our other locations.

Copyright © 2025 EDMi Group. All Rights Reserved. All trademarks are the property of their respective holders. EDMi Group continuously develops its products and solutions and reserves the right to modify specifications contained herein without notice.