



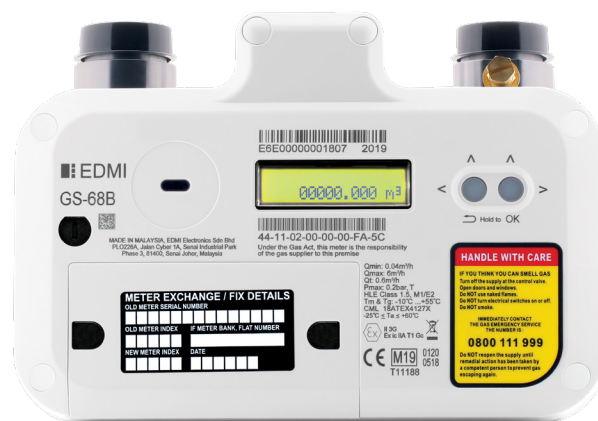
# GS-68B

Class 1.5

Residential SMETS2  
Dual Band Gas Meter

Designed for the residential smart meter rollout in Great Britain, the GS-68B is a variant of our second generation SMETS2 compliant gas meters.

Operating at Zigbee 2.4GHz and 868MHz and GBCS compliant, this ultrasonic meter is highly accurate and tamper proof and can work in credit or prepayment mode.



## Key Features



HIGH  
ACCURACY



ANTI TAMPER

**P-PAY**

PREPAYMENT



UPGRADEABLE



LARGE LCD  
DISPLAY

**IP67**

SUPERIOR INGRESS  
PROTECTION



LOW POWER  
CONSUMPTION

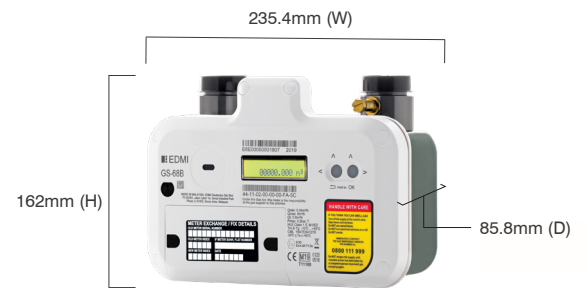


ZIGBEE  
COMPLIANT

# GS-68B

Class 1.5

## Residential SMETS2 Dual Band Gas Meter



Weight: 2.2kg

### Standards and Compliance

- Class 1.5
- EN 14236:2018 (MID) Directive 2014/32/EU Ultrasonic domestic gas meters
- SMETS2 Compliant
- Smart Meter Certified to ATEX Zone 2
- GBCS v3.2, SMETS2 v4.2
  - CPA v1.2
  - Zigbee 1.4b
  - Welmec 7.2 2018
  - RED EN 300.328
  - RED EN 301.489
  - RoHS 2012
  - WEEE 2013

### Measurement

- Measurement accuracy: 0.04 to 0.6m<sup>3</sup>/h < +/- 3%  
0.60 to 6m<sup>3</sup>/h < +/- 1.5%

### Pressure Loss

- Less than 200Pa at 6m<sup>3</sup>/h (including valve)

### Gas Supply

- Natural Gas H, L and E
- Meter capacity: 6m<sup>3</sup>/h

### Input Measurement

- Single bounce speed of sound time measurement

### Disconnect Valve

- Brushless DC-powered motor <0.1 l/h leak rate
- Fast closing valve
- Gas seal compliant EN 549
- Oil-less construction
- Local/remote operation

### Battery

- Main Cell Type Lithium (Replaceable)
- Backup: Super capacitor

### Real-time Clock

- Accuracy: < +/-5 secs/month

### Calendar

- Backup time 3 days without main battery

### Display

- Large 16 x 2-character display
- Display digit size: 5.3 x 3.3mm
- Multiple screens of meter parameter
- Backlight standard

### Materials

- Metal chassis: Alu-Zinc hot-dip galvanized steel
- Smart index: Polycarbonate
- Ultrasonic unit: Polybutylene terephthalate flow path, sensor and PCB

### Connections

- Connections: 1"BS 746 couplings 6" centres
- Test point

### Processor

- Low power
- Hardware cryptography
- Back up software images for high reliability

### Load Survey/Profile

- Up to 2.0 Megabytes of non-volatile memory
- 13 months of half hourly data
- 48 half hourly intervals

### Tamper Detection and Alarms

- Metrological seals to gas meter
- Communications and battery cover tamper evident seals
- Meter tamper detection alarm
- Alarms programmable to display LCD status and communications event

### Prepayment

- Credit or debit operation
- UTRN (Unique Transaction Reference Number) per GB specifications
- Minimum charges, standing charges and emergency credit
- Configurable warnings and indicators
- External debt repayment x2

### Communications

- Zigbee 2.4GHz
- Zigbee 868MHz
- GBCS object support

### Environmental

- Operating range:  
-10°C to +55°C
- Storage range:  
-20°C to +60°C
- Relative humidity: 95%
- Ingress protection: IP67
- Corrosion: 1000h salt spray compliant
- Resistant to high temperature according to EN 14236

#### EDMI Limited (Singapore)

47 Yishun Industrial Park A,  
Singapore 768724

#### EDMI Pty Ltd (Australia)

Level 7, 51 Alfred Street,  
Fortitude Valley, Queensland  
Australia 4006

#### EDMI Europe Limited (United Kingdom)

Form 1, 17 Barley Wood  
Business Park, Bartley Way,  
Hook, Hampshire RG27  
9AXA, United Kingdom

#### EDMI America Inc. (USA)

One City Plaza, Suite 1301,  
421 Fayetteville Street,  
Raleigh, North Carolina,  
27601 United States

[www.edmi-meters.com](http://www.edmi-meters.com)



Visit our website at [www.edmi-meters.com](http://www.edmi-meters.com) to find our other locations.

Copyright © 2025 EDMi Group. All Rights Reserved. All trademarks are the property of their respective holders. EDMi Group continuously develops its products and solutions and reserves the right to modify specifications contained herein without notice.