

# Mk10E

**ATLAS** – Class 0.5S and Class 1S

Three Phase CT Smart Meter

Built on the advanced Atlas metering platform, the Mk10E has a Class 0.5S measurement engine with many enhancements including smart grid solutions, high data storage, data processing and enhanced communications capabilities.



## Key Features

**AMI**

AMI READY



HIGH  
ACCURACY



LARGE DATA  
STORAGE



MULTIPLE COMMS  
OPTIONS



MEASURE  
EVERYTHING



UPGRADEABLE

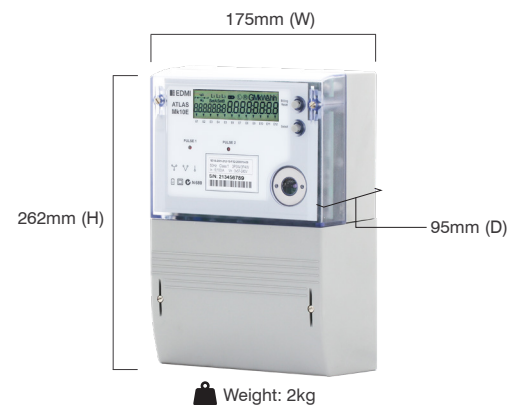


ANTI TAMPER

# Mk10E

ATLAS - Class 0.5S and Class 1S

## Three Phase CT Smart Meter



### Standards and Compliance

- Class 0.5S and Class 1S
- IEC 62052-11, 62052-31, 62053-22, 62053-24, 62054-21
- AS 62052.11, 62053.22, 62052-31, 62053-24, 62054-21
- NMI M6

### Measurement

- 3 phase 3 wire
- 3 phase 4 wire

### Voltage

- Nominal voltage: 57.7V – 240V
- Operating range: 52V – 290V
- Withstand: Up to 456V
- Burden: IEC 62053-61 compliant

### Current

- CT range: 1/4A, 1/10A, 5/6A, 5/10A, 5/20A
- CT limit: 20 x I<sub>max</sub> for 0.5 seconds
- Burden: <0.5VA/phase
- Overload current: 128A

### Frequency

- 50Hz ± 6%

### Inputs/Outputs Configuration

- Up to 4 independently isolated I/O
- Options include: Passive/Active inputs, S0/BOSFET/Relay outputs
- Passive input voltage: 5V, 12V, 48V, 110V, 240V
- Active input voltage: 12V (common ground)
- S0 Output: 27V, 27mA maximum
- BOSFET output: 240V, 100mA maximum
- Relay output: 240V, 2A
- 2 Programmable LED indicators
- Programmable output pulse width: 1ms to 100ms

### Battery

- Internal battery
- Option for external for backup
- Option for additional Supercap (72 hours)
- Backup time: 10 years without power (Lithium Battery)

### Real-time Clock

- Accuracy (internal) within 15 seconds per month at 23°C
- Internal clock or line synchronisation

### Data Memory

- 4.2 MB of non-volatile memory

### Display

- 8 digit numerical value field and 6 digit description field
- Large 14 segment (starburst) alphanumeric display with 10.5mm x 5.1mm digit size
- Up to 60 user-defined screens of any meter parameter
- Definable enunciators
- Display available without main power
- LED Backlight Option

### Measured Values

- 3 elements 4 quadrants
- Import/Export/Absolute Wh, varh and VAh
- Fundamental Wh
- Per quadrant Wh, varh and VAh
- Phase A,B,C and Total
- W, var, VA, Vrms, Irms
- Power factor, frequency, phasor angles
- Supports ripple control/AFLC

### Power Quality Indication

- Total Harmonic Distortion (THD)
- Unbalance (sequence components)
- Option for live waveform display
- Sag/Swell
  - 5 Cycle resolution
  - Records time/date/phase/duration/average and worst excursion
  - Programmable trigger levels

### Load Survey/Profile

- Over 10,000 days storage (2 channels, 30-minute intervals)
- Supports Advanced Demand Management (ADM) with prioritised rules
- AMI ready

- Up to 32 channels and 4 independent surveys
- Intervals programmable from 1 to 60 minutes
- Energy, instantaneous readings, pulsing input as channel sources
- Ability to store average/minimum/maximum values for interval duration

### Time of Use

- Up to 8 rates plus unified rate
- Up to 32 separate import and export registers
- Daily, weekly, monthly, yearly and special days
- Up to 200 programmable special days
- Up to 61 previous billing periods plus billing totals
- Block or rolling maximum demand
- Time of maximum demand
- Energy, pulsing inputs

### Calendar

- Supports Daylight Saving time
- Supports Gregorian or Persian calendars

### Tamper Detection and Alarms

- Provision for sealing with conventional wire or plastic seals
- Bypassing current and reverse current detection
- Advanced tamper detection and logging
- Pre-programmed alarms for meter self-check
- Alarms trigger LEDs, enunciators, relay outputs or communications event
- Alarms are stored in event logs
- Configurable threshold; 3D magnetic tamper detection
- Source impedance monitoring

### Security

- Multi-level security (username and password including encrypted log-in)
- Up to 7 independent security levels
- Up to 6 individual users
- AES128 bit encryption

### Safety

- Protective Class II
- Surge Test: 6kV
- Impulse Test: 12kV

### Communications

- Up to 3 independently working communication ports:
  - Optical port: FLAG (IEC 62056-21) or ANSI Type 2 (ANSI C12.18)
  - RS-232 with modem power supply (compatible with the majority of modems in the market)
  - RS-485 multi-drop (2 or 4-wire RJ45 or 2-wire screw terminal)
- Compatible with MV-90™

### Protocol

- EDM command line
- DLMS
- MODBUS

### Software

- EDM AMI 2.0 (Storm)
- EDM Storm mobile software available for meter programming and reading
- EDM Energy Cloud software available for large scale AMI and AMR solutions
- Supports Function Based Setup

### Environmental

- Specified operating range: -25 °C to +60 °C
- Operating range limit: -40 °C to +70 °C
- Storage range limit: -40 °C to +80 °C
- Relative humidity: Up to 95% non-condensing for 30 days
- Ingress protection: IP54

#### EDMI Limited (Singapore)

47 Yishun Industrial Park A,  
Singapore 768724

#### EDMI Pty Ltd (Australia)

Level 7, 51 Alfred Street,  
Fortitude Valley, Queensland  
Australia 4006

#### EDMI Europe Limited (United Kingdom)

Form 1, 17 Barley Wood  
Business Park, Bartley Way,  
Hook, Hampshire RG27  
9AXA, United Kingdom

#### EDMI America Inc. (USA)

One City Plaza, Suite 1301,  
421 Fayetteville Street,  
Raleigh, North Carolina,  
27601 United States

[www.edmi-meters.com](http://www.edmi-meters.com)



Visit our website at [www.edmi-meters.com](http://www.edmi-meters.com) to find our other locations.

Copyright © 2025 EDM Group. All Rights Reserved. All trademarks are the property of their respective holders. EDM Group continuously develops its products and solutions and reserves the right to modify specifications contained herein without notice.