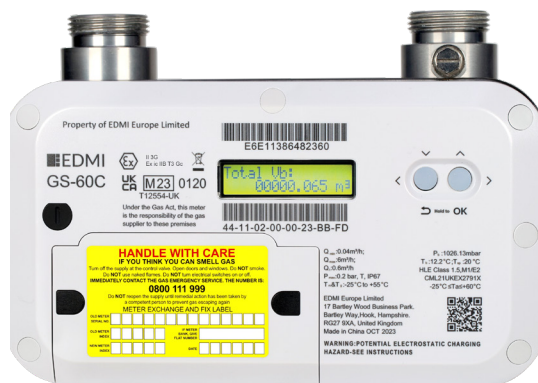




GS-60C

Class 1.5

Residential SMETS2 Gas Meter



Designed for the residential smart meter rollout in Great Britain, the GS-60C is the third generation of our SMETS2 compliant gas meters.

Operating at Zigbee 2.4GHz and GBCS compliant, this thermal-mass gas meter is highly accurate and tamper proof and can work in credit or prepayment mode.

I Key Features



HIGH
ACCURACY



ANTI TAMPER

P-PAY

PREPAYMENT



UPGRADEABLE



LARGE LCD
DISPLAY

IP67

SUPERIOR INGRESS
PROTECTION



LOW POWER CONSUMPTION



ZIGBEE
COMPLIANT

GS-60C

Class 1.5

Residential SMETS2 Gas Meter



Standards and Compliance

- UK GBCS and SMETS2 compliant
- UKCA MIR regulations 2016 certified
- EN 14236:2018 domestic gas meters
- UKEX (ATEX) Zone 2
- GBCS v3.2
- SMETS2 v4.2
- CPA v1.2
- Zigbee 1.4
- RED EN 300.328 and EN 301.489
- RoHS 2012
- WEEE 2013

Measurement

- Micro thermal mass measurement technology
- Qmin: 0.04 m³/hr, Qt: 0.6 m³/hr, Qmax: 6 m³/hr
- MIR accuracy Class 1.5: 0.04 to 0.6m³/h < +/- 3%
0.6 to 6m³/h < +/- 1.5%

Pressure Loss

- Less than 200Pa at 6m³/h (including valve)
- Measurements reported at standard conditions 12.2°C and 1026 mbar

Gas Supply

- Natural Gas H, L and E
- Meter capacity: 6m³/h
- Up to 23% Hydrogen Blend

Disconnect Valve

- Brushless DC-powered motor <0.04 l/h leak rate
- Gas seal compliant EN549
- Oil-less construction
- Local/remote operation

Battery

- Main cell type lithium-thionyl chloride (Replaceable)
- Backup: Super capacitor

Time

- Real-time clock
- Accuracy: < +/-5 secs/month
- Half hour billing calendar

Display

- Large 16 x 2-character display
- Display digit size: 5.3 x 3.3mm
- Multiple screens of meter parameter
- Backlight standard

Materials

- Metal chassis: Alu-Zinc coated steel
- Smart index: Polycarbonate
- MEMS based sensor for thermal-mass flow measurement

Connections

- Connections: 1"BS 746 couplings 6" centres
- Test point

Processor

- Low power
- Hardware cryptography
- Back up software images for high reliability

Load Survey/Profile

- 13 months of half hourly data
- 48 half hourly intervals

Tamper Detection and Alarms

- Metrological seals to gas meter
- Battery cover tamper detection and tamper evident seals
- Programmable alarms displayed on LCD and via communications event

Prepayment

- Credit or debit operation
- UTRN (Unique Transaction Reference Number) per GB specifications
- Minimum charges, standing charges and emergency credit
- Configurable warnings and indicators
- External debt repayment x2

Communications

- Zigbee SEP 1.4
- GBCS and SMETS object support

Environmental

- Operating range: -25°C to +55°C
- Storage range: -25°C to +55°C
- Relative humidity: 95%
- Ingress protection: IP67
- Corrosion: 500h salt spray compliant

EDMI Limited (Singapore)

47 Yishun Industrial Park A,
Singapore 768724

EDMI Pty Ltd (Australia)

Level 7, 51 Alfred Street,
Fortitude Valley, Queensland
Australia 4006

EDMI Europe Limited (United Kingdom)

Form 1, 17 Barley Wood
Business Park, Bartley Way,
Hook, Hampshire RG27
9AXA, United Kingdom

EDMI America Inc. (USA)

One City Plaza, Suite 1301,
421 Fayetteville Street,
Raleigh, North Carolina,
27601 United States

www.edmi-meters.com



Visit our website at www.edmi-meters.com to find our other locations.

Copyright © 2025 EDM I Group. All Rights Reserved. All trademarks are the property of their respective holders. EDM I Group continuously develops its products and solutions and reserves the right to modify specifications contained herein without notice.